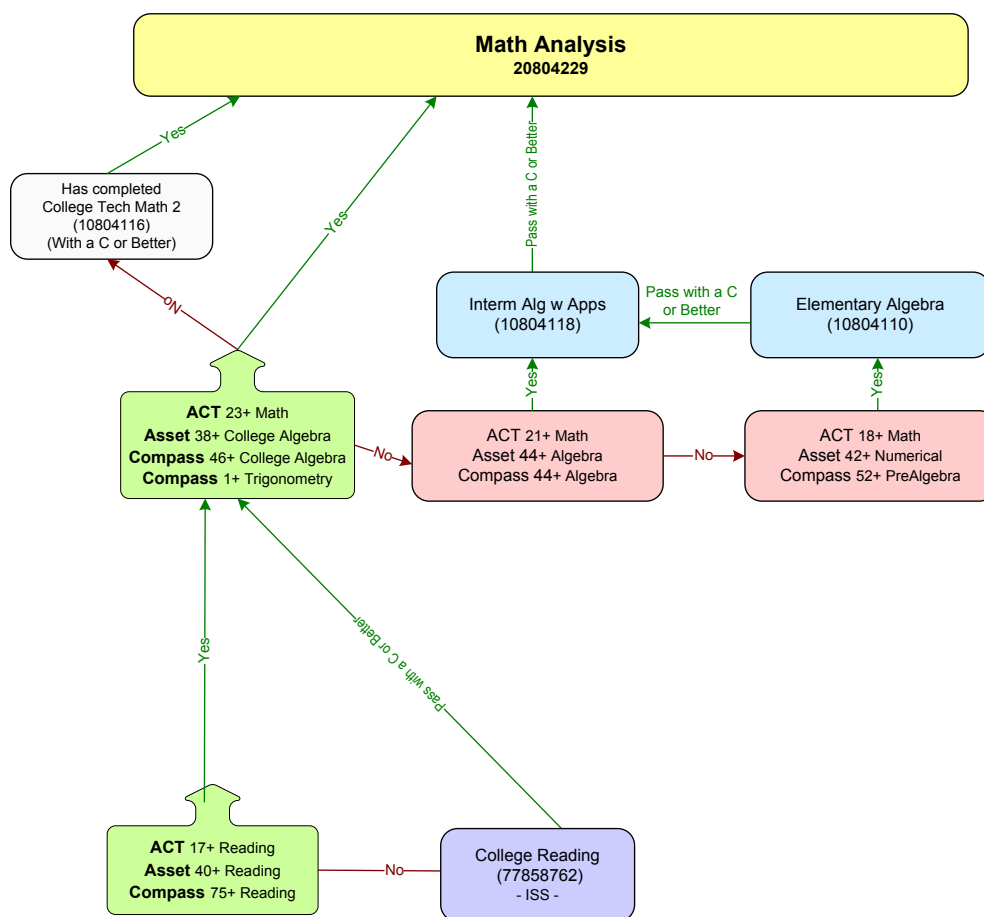


Pathway to Success Math Analysis



Prerequisite(s): ACT 17+ (Reading), ASSET 40+ (Reading), COMPASS 75+ (Reading) or College Reading (77858762) with a C or better **AND** ACT 23+ (Math), ASSET 38+ (College Algebra), COMPASS 46+ (College Algebra), COMPASS 1+ (Trigonometry) **OR** Intermediate Algebra w Applications (10804118) with a C or better **OR** College Tech Math 2 (10804116) with a C or better.

February 2012

The above diagram shows the pathway you must follow in order to take Math Analysis (20804229).

If you score ACT 17+ (Reading), ASSET 40+ (Reading), COMPASS 75+ (Reading) **AND** you score ACT 23+ (Math), ASSET 38+ (College Algebra), COMPASS 46+ (College Algebra), COMPASS 1+ (Trigonometry), then you can take Math Analysis (20804229).

If your **reading** scores are lower than listed above, you must pass College Reading (77858762) through the ISS Division with a C or better before you can take Math Analysis (20804229).

If you do not meet the **math** scores required as a prerequisite, but you score ACT 21+ (Math), ASSET 44+ (Algebra), COMPASS 44+ (Algebra), then you should take Intermediate Algebra with Applications (10804118). You must pass Intermediate Algebra with Applications (10804118) with a C or better in order to take Math Analysis (20804229). If your scores are lower than those listed above, but you score ACT 18+ (Math), ASSET 42+ (Numerical), COMPASS 52+ (PreAlgebra), then you can take Elementary Algebra with Applications (10804110). You then must pass Elementary Algebra with Applications (10804110) with a C or better. You then would need to take Intermediate Algebra with Applications (10804118). Once you pass Intermediate Algebra with Applications (10804118) with a C or better, you can take Math Analysis (20804229).

If you have taken College Technical Math 2 (10804116) and earned a C or better in the class, you can take College Algebra.